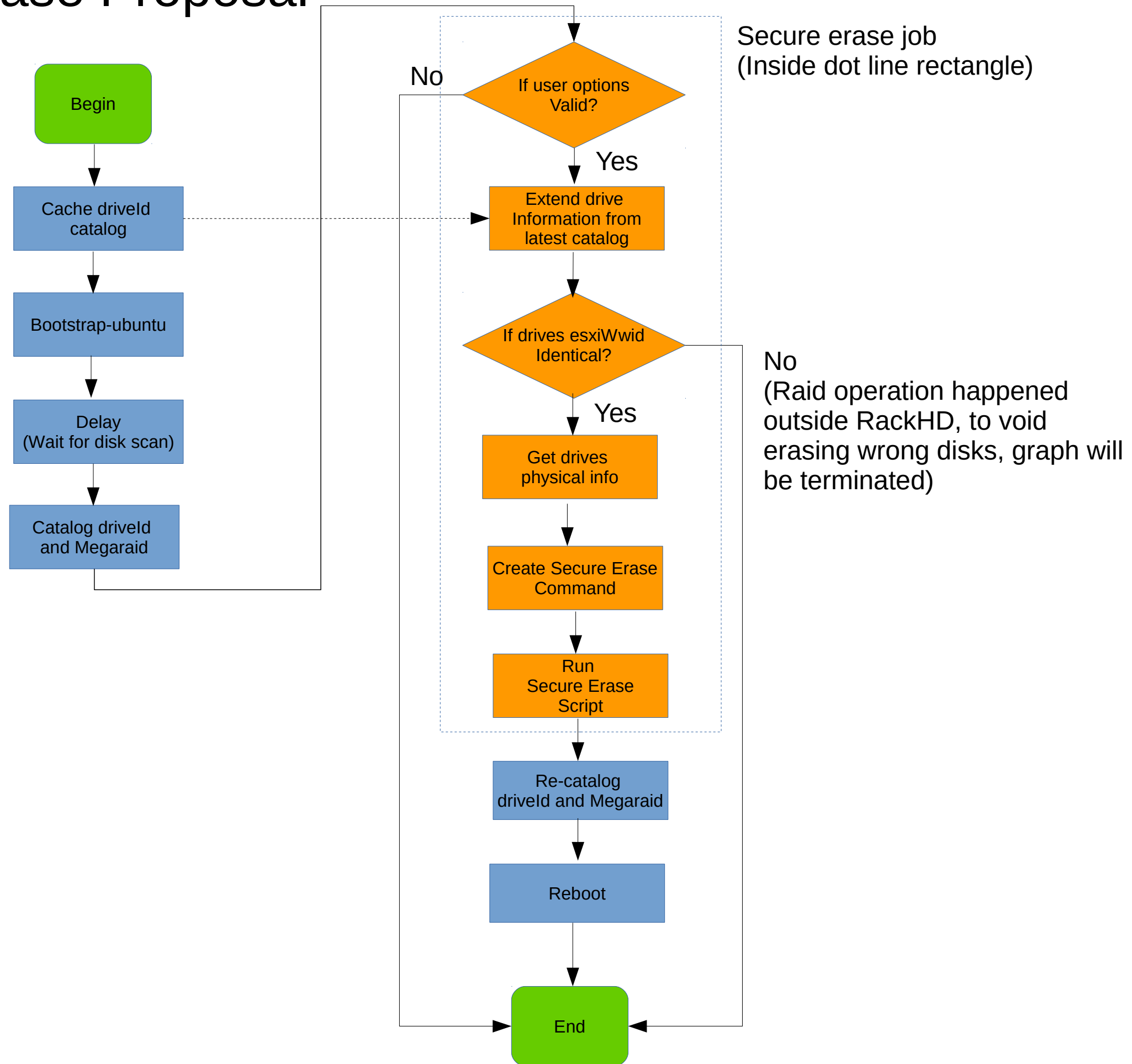
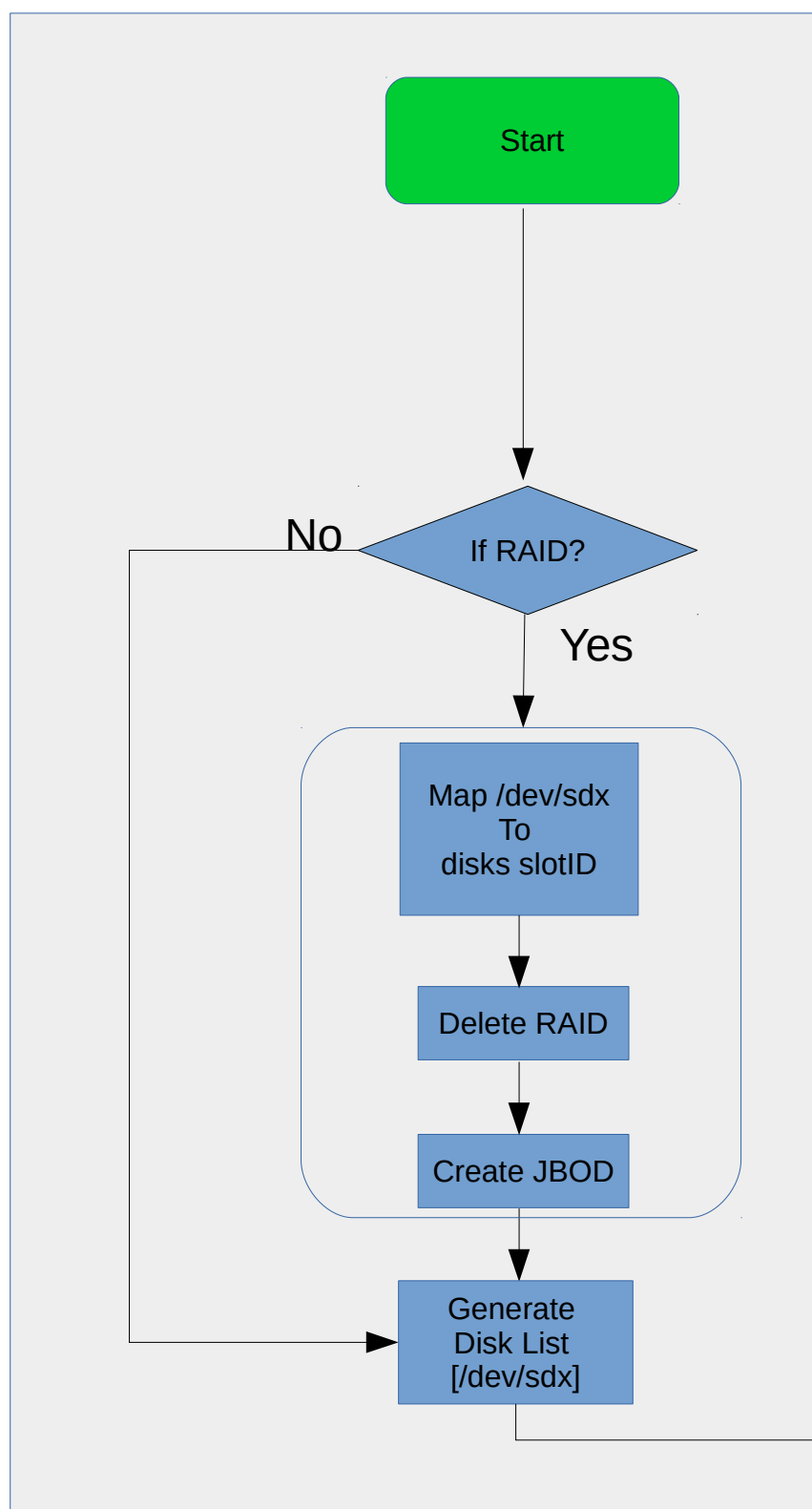


# Secure Erase Proposal

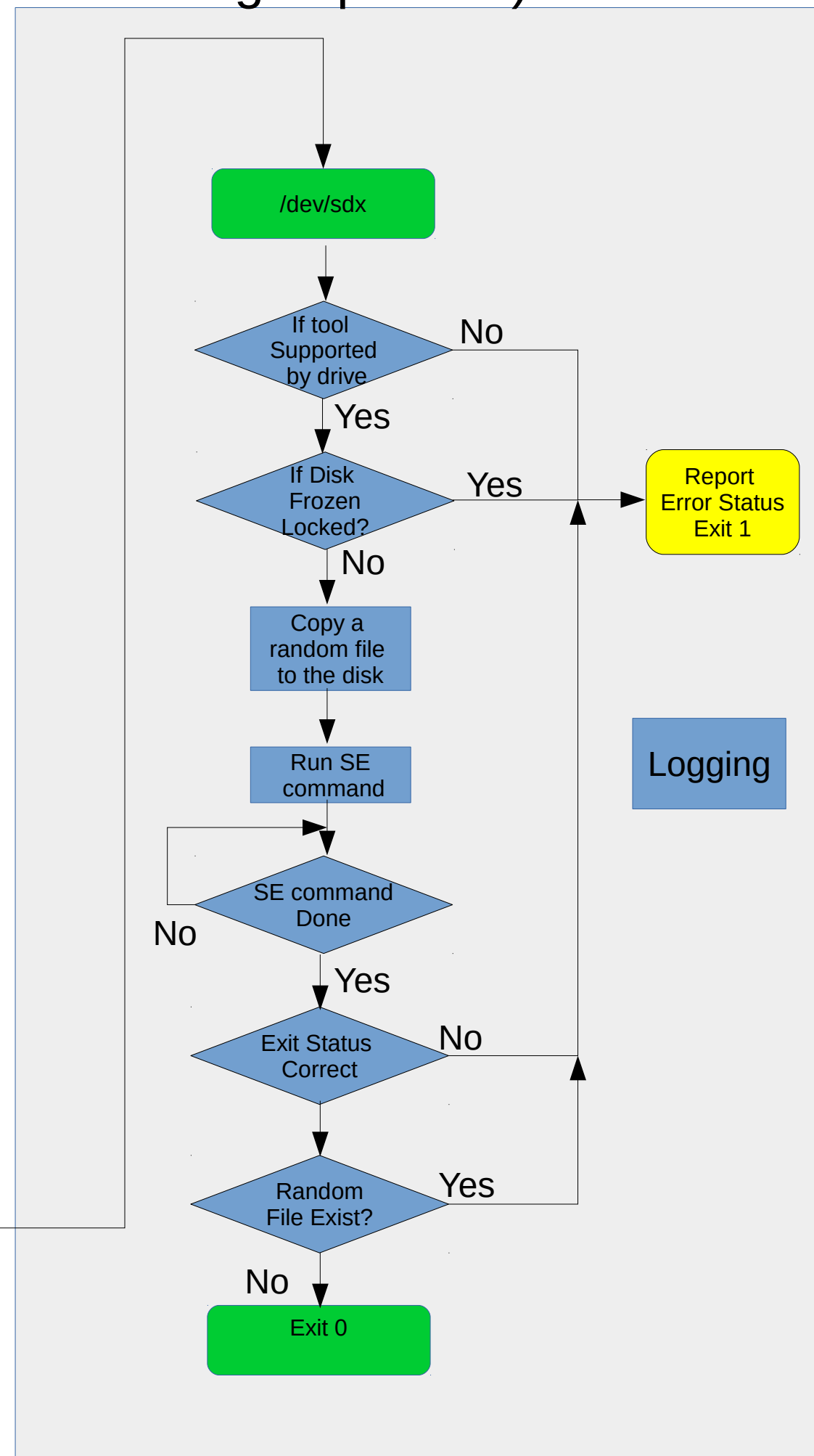


# hdparm erase

Erase Command Module  
(Each disk have such module  
running in parallel)



**RAID Deletion Module:**  
Input: /dev/sdx w/ raid  
Output: /dev/sdx w/o raid

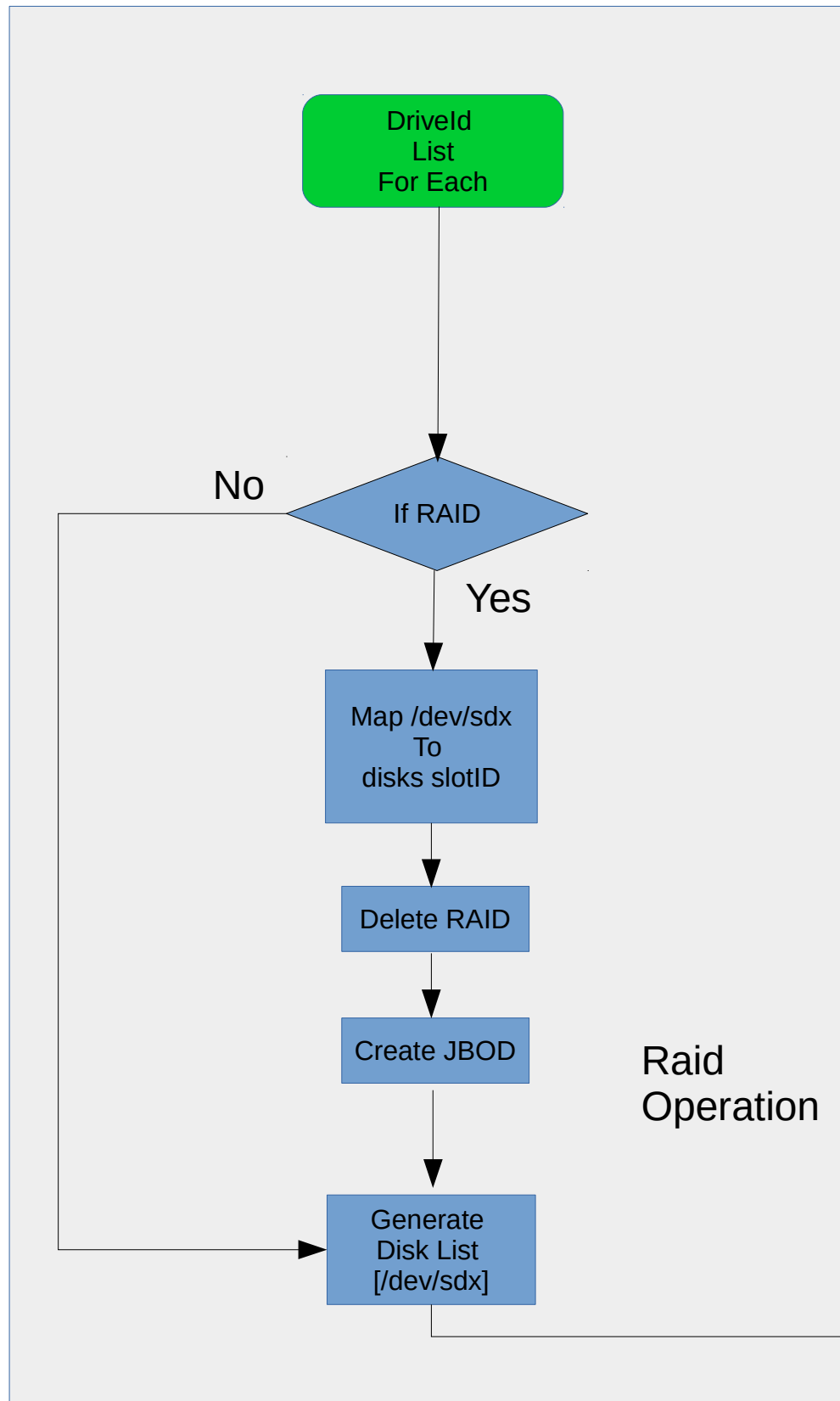


# sg\_sanitize/format erase

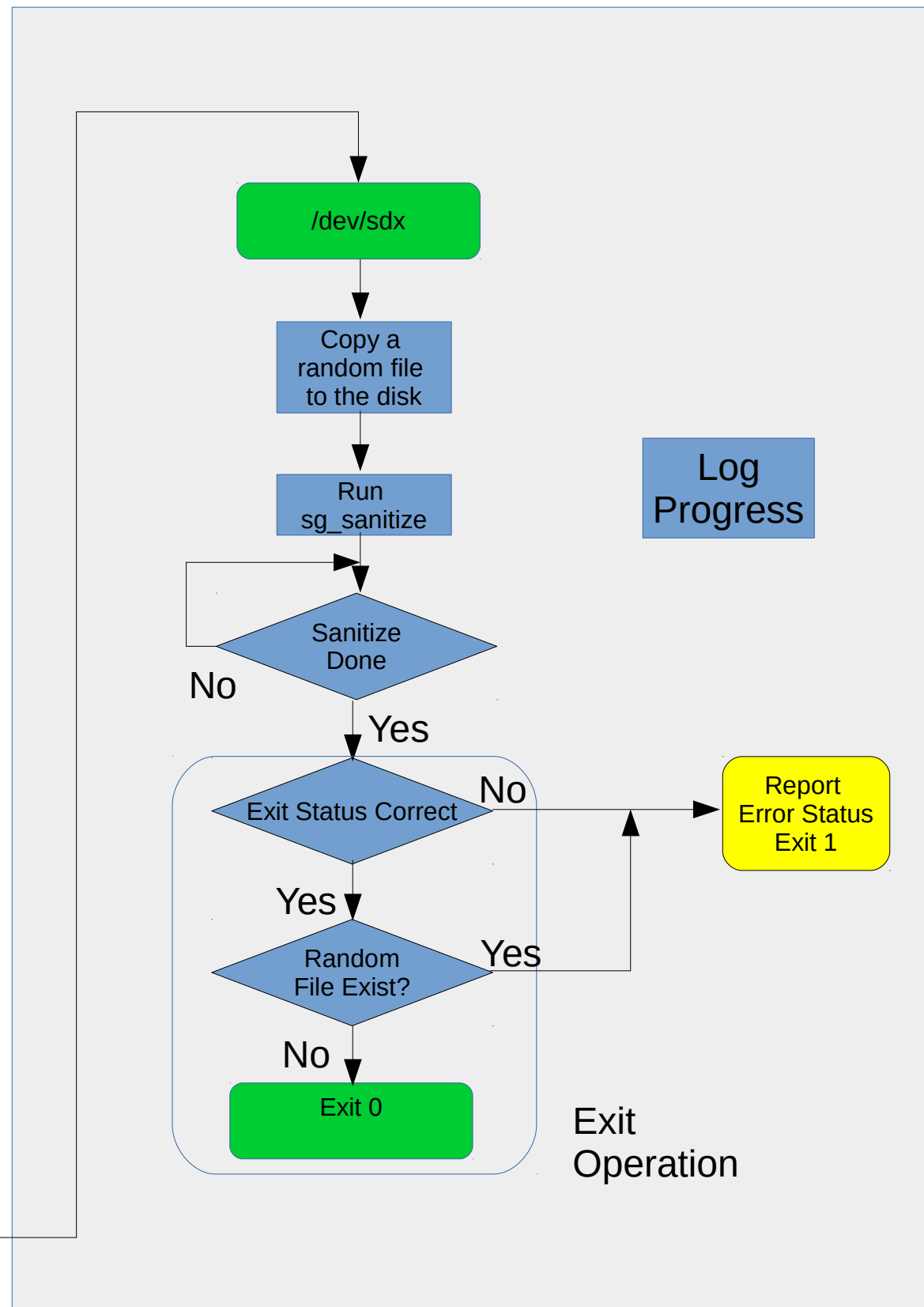
## RAID Deletion Module:

Input: /dev/sdx w/ raid

Output: /dev/sdx w/o raid



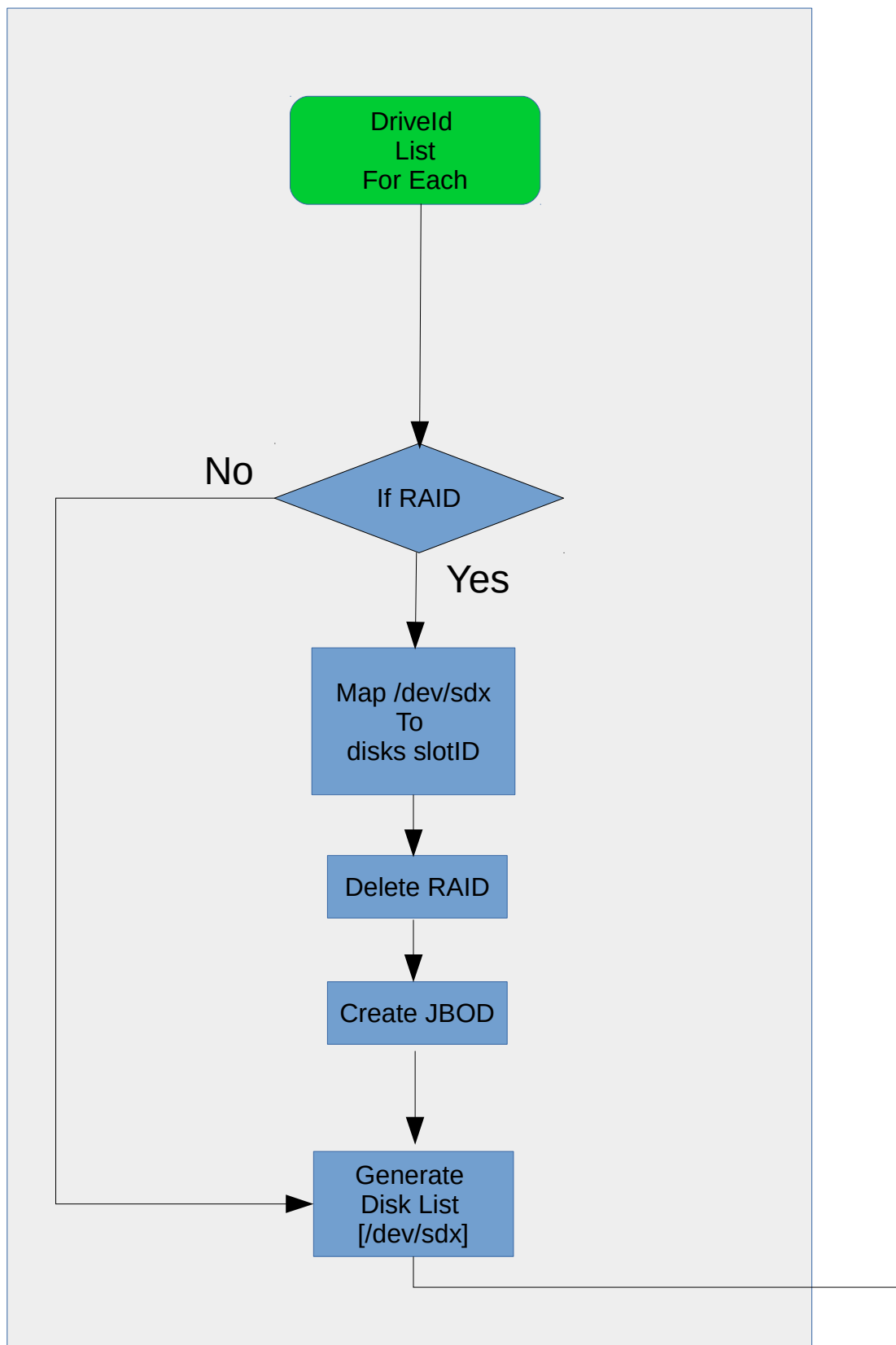
## Erase Command Module (Each disk have such module running in parallel)



# scrub erase

## RAID Deletion Module:

Input: /dev/sdx w/ raid  
Output: /dev/sdx w/o raid



## Erase Command Module (Each disk have such module running in parallel)

